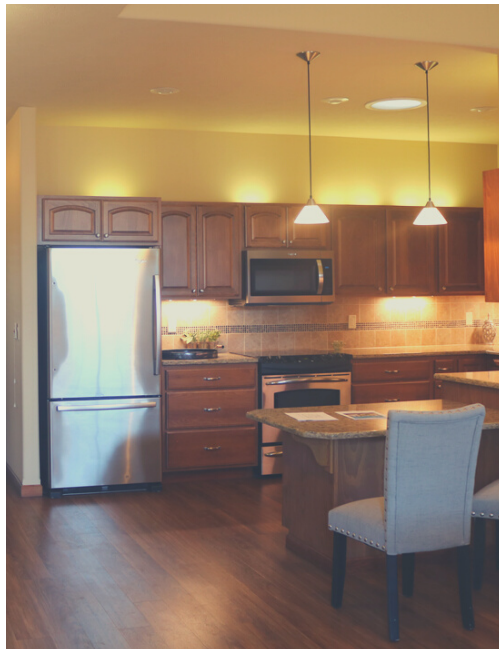
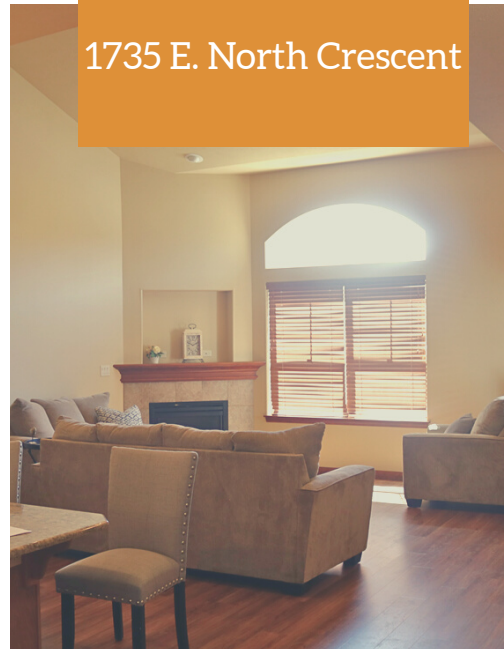




# AVAILABLE WEST VILLAGE HOME



1735 E. North Crescent



Beautiful Large Kitchen for  
Gourmet Cooks



Covered Private Back Porch and  
Extra Storage

Roomy Living Space with  
Vaulted Ceiling and Fireplace

## CALL FOR PRICE

SERVICE FEE INCLUDES MAINTENANCE AND GROUNDS KEEPING

### Favorite Amenities

Community Gardens

RiverBrew Cafe

Aquatic and Fitness Center

Centennial Trail Access

Community Wood Shop

Dog Parks

**Lisa Egger**

509-482-8174

legger@riverviewretirement.org



**Schedule a Tour Today!**

**Vivian Bazan**

509-482-9588

vbazan@riverviewretirement.org



### House Features

Master Bedroom with En Suite Bath

Guest Bedroom

Separate Full Guest Bath

Electric Fireplace

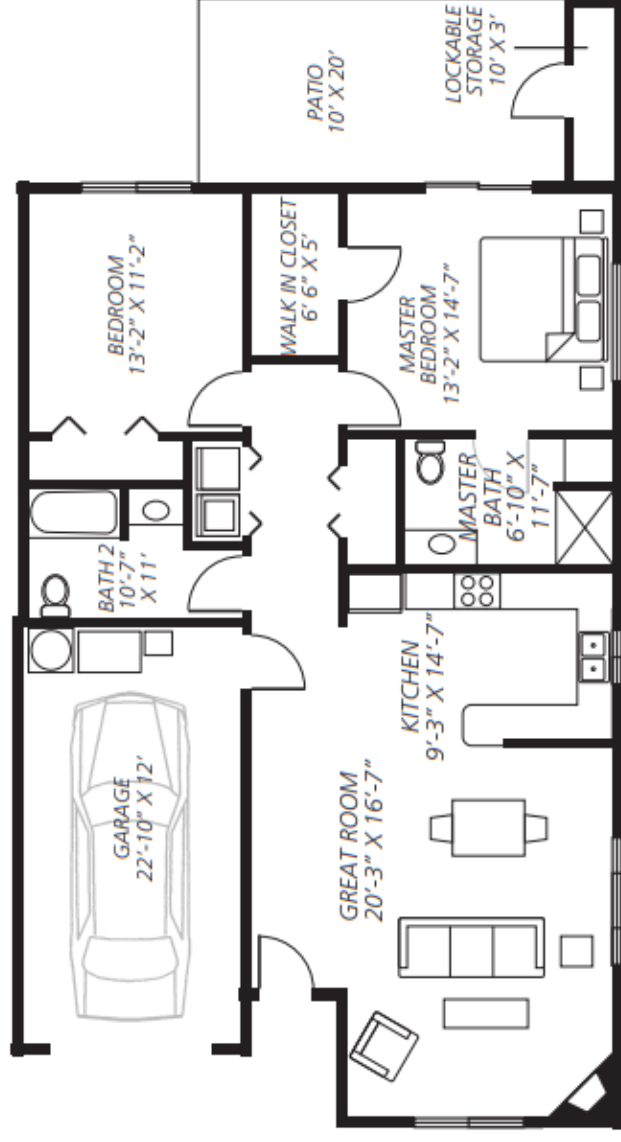
Full Laundry Hook ups

1 Car Garage

Private Back Patio with Pergola

1,360 Square Feet

[www.riverviewretirement.org](http://www.riverviewretirement.org)



**Four Plex End Model** - 1,360 sq. ft. livable space/295 sq. ft. garage